

RESOMER[®] GL 903

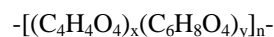
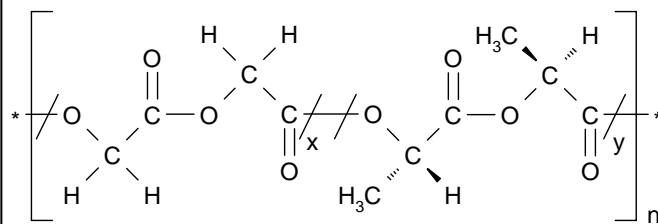


Chemical name:: Poly(glycolide-co-L-lactide)

CAS number: 30846-39-0

Material number: 65078

24 January 2006



Specification

| | |
|-----------------------------|--|
| Description: | white to brownish granulate |
| Odour: | nearly odourless |
| Identity: | NMR- spectrum conforms to reference |
| Polymer composition: | 87:13 to 93:7 molar ratio glycolide : L-lactide |
| Inherent viscosity: | 1.3- 2.3 dl/g 0.1 % in HFIP, 30 °C |
| Residual monomer: | max. 3 % glycolide monomer max. 3 % L-lactide monomer |
| Residual solvent: | max. 890 ppm toluene |
| Water: | max. 0.5 % |
| Tin: | max. 100 ppm |
| Heavy metals: | max. 10 ppm |
| Sulphated ash: | max. 0.1 % |

