

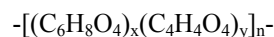
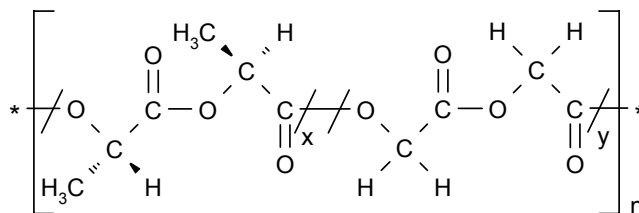
RESOMER® LG 824 S

Chemical name: Poly(L-lactide-co-glycolide)

CAS number: 30846-39-0

Material number: 51535

1 September 2005



Specification

Description:	white to off-white granulate
Odour:	nearly odourless
Identity:	NMR-spectrum conforms to reference
Polymer composition:	79:21 to 85:15 molar ratio L-lactide : glycolide
Inherent viscosity:	1.7 - 2.6 dl/g 0.1 % in chloroform, 25 °C
Residual monomer:	max. 0.5 % L-lactide monomer max. 0.5 % glycolide monomer
Residual solvent:	max. 890 ppm toluene
Water:	max. 0.5 %
Tin:	max. 100 ppm
Heavy metals:	max. 10 ppm
Sulphated ash:	max. 0.1 %