

## RESOMER<sup>®</sup> LG 855 S

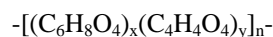
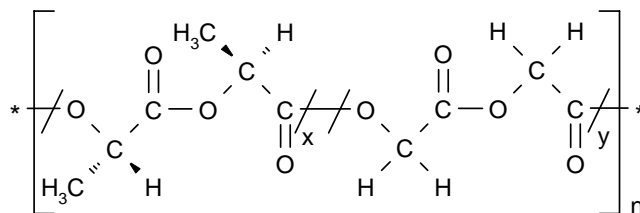


Chemical name: Poly(L-lactide-co-glycolide)

CAS number: 30846-39-0

Material number: 64361

20 August 2007



### Specification

<b>Description:</b>	white to off-white granulate
<b>Odour:</b>	nearly odourless
<b>Identity:</b>	NMR-spectrum conforms to reference
<b>Polymer composition:</b>	82:18 to 88:12 molar ratio L-lactide : glycolide
<b>Inherent viscosity:</b>	2.5 - 3.5 dl/g 0.1 % in chloroform, 25 °C
<b>Residual monomer:</b>	max. 0.5 % L-lactide monomer max. 0.5 % glycolide monomer
<b>Residual solvent:</b>	max. 890 ppm toluene
<b>Water:</b>	max. 0.5 %
<b>Tin:</b>	max. 100 ppm
<b>Heavy metals:</b>	max. 10 ppm
<b>Sulphated ash:</b>	max. 0.1 %

