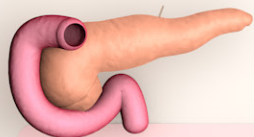


CARDIOMETABOLIC DISEASES RESEARCH FOCUS

DIABETIC EYE

With limited treatments available for patients with diabetic eye diseases, our rapidly progressing research program is building on several **clinical stage pipeline projects** with the potential to provide new hope for patients.



TYPE 2 DIABETES

Our research in type 2 diabetes ranges from increasing our knowledge of empagliflozin and the mechanisms behind its cardiovascular and renal effects, to exploring how we can halt or even reverse beta cell degeneration or preserve beta cell function.

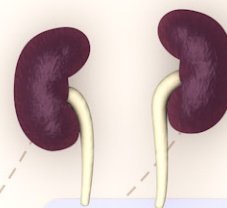
LIVER DISEASES

Non-alcoholic steatohepatitis and liver fibrosis have a high prevalence in obese and diabetic patients. Our comprehensive R&D program has a **Fast Track project in phase II** clinical development, which is complemented by a number of collaborations with academic and industry partners. These initiatives are investigating a range of innovative treatment approaches to prevent disease progression and restore liver function.



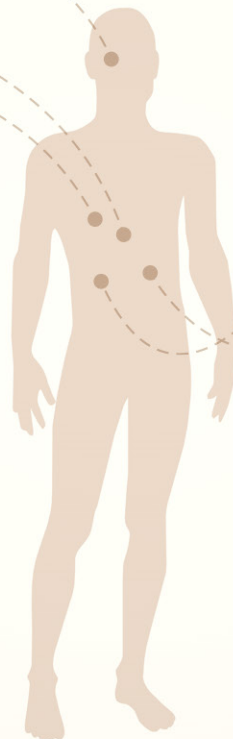
DIABETIC KIDNEY

Chronic kidney disease and diabetic nephropathy are often the result of raised blood pressure and diabetes. Nearly 40% patients with type 2 diabetes have some degree of decline in renal function¹. We are initiating a **large scale outcomes trial** to investigate the effect of empagliflozin in patients with chronic kidney disease and have new molecules in development.



OVERWEIGHT & OBESITY

Nearly two billion people worldwide are either overweight or obese which puts them at greater risk of cardiovascular disease and diabetes². We are working, together with our partners, on developing novel therapeutic approaches to promote weight loss. One of these approaches, a long-acting amylin analog, has demonstrated significant weight loss in preclinical models of obesity and has recently entered phase I development³.



References

- 1 *BMJ Open Diabetes Research and Care* 2016;4:e000154. doi:10.1136/bmjdr-2015-000154
- 2 http://www.who.int/gho/ncd/risk_factors/overweight_text/en
- 3 https://cws.hugonline.com/Z/136974/PR/201708/2128566_5.html