

Welcome to the Annual Results Press Conference 2022

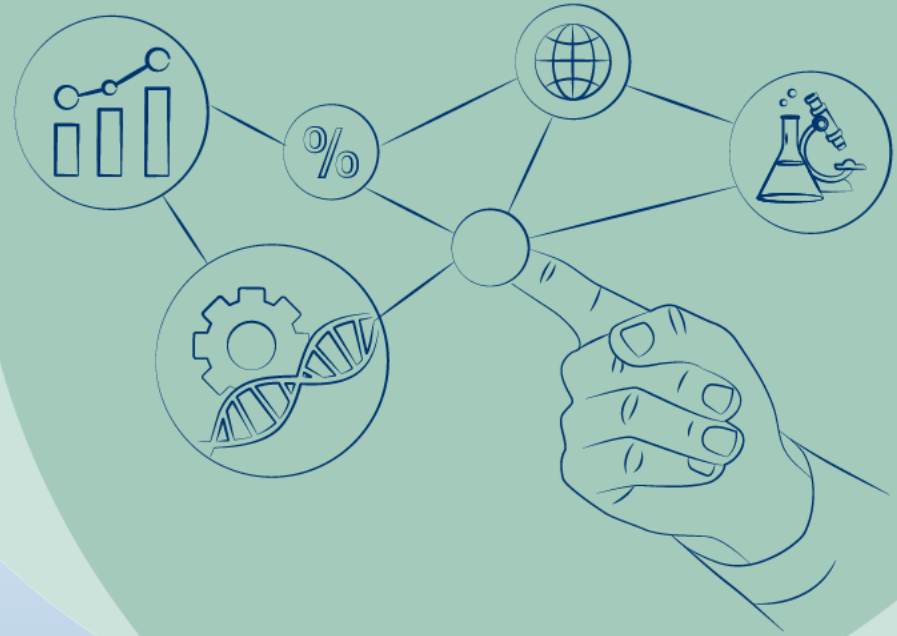
TOMORROW



Research for a
Healthier Future



Annual Results Press Conference 2022

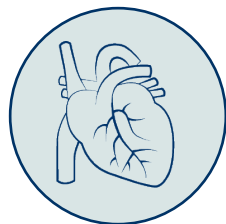


Hubertus von Baumbach
Chairman of the Board of Managing Directors



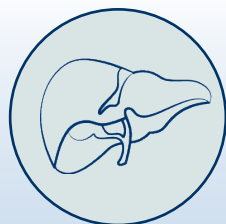
Pioneering research to improve lives of humans and animals

Pipeline acceleration in Human Pharma



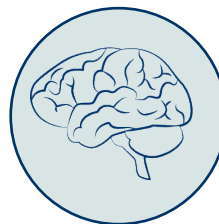
BREAK-THROUGH THERAPY DESIGNATION

JARDIANCE®:
Treatment of heart failure



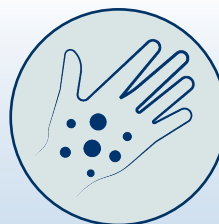
FAST-TRACK DESIGNATION

GLP-1/glucagon agonist (BI 456906): Treatment of non-alcoholic fatty liver disease



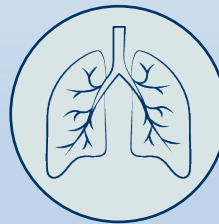
BREAK-THROUGH THERAPY DESIGNATION

Gly-T1 inhibitor (BI 425809): Treatment of cognitive impairment associated with schizophrenia (CIAS)



BREAK-THROUGH THERAPY DESIGNATION

Spesolimab: Treatment of generalized pustular psoriasis (GPP)



BREAK-THROUGH THERAPY DESIGNATION

PDE4B inhibitor (BI 1015550): Treatment of idiopathic pulmonary fibrosis



Investing in Animal Health innovation



Learnings from the pandemic

**A foreseeable health
challenge:
antimicrobial resistance**

Sustainable Development – For generations



**Good Health for
People & Animals**



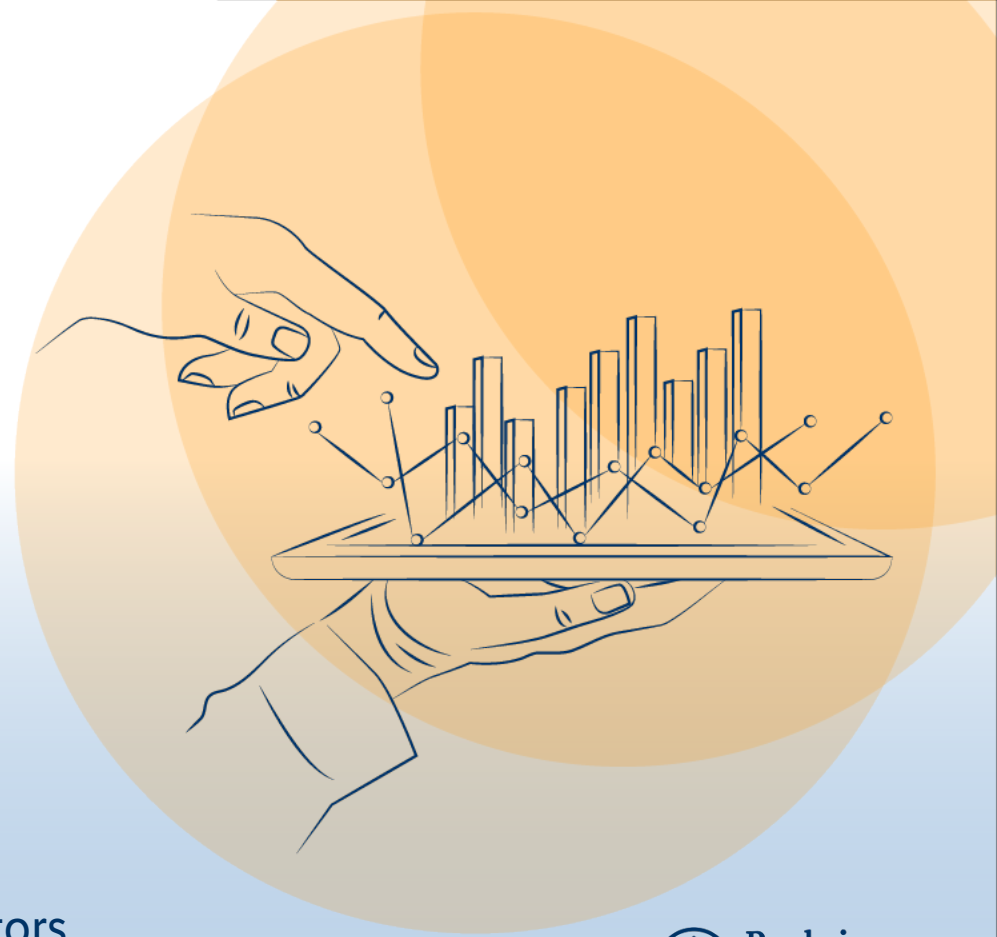
**Good Health for
Communities &
Our People**



**Good Health
for the Planet**



Financial year 2021



Michael Schmelmer

Member of the Board of Managing Directors
responsible for Finance & Group Functions

**We create a
healthy,
inclusive, and
creative working
environment**



Long-term commitment



Global Top Employer 2021



**Tailor-made education
and training**

Investing in our global supply network

Lyon



Ingelheim



Vienna



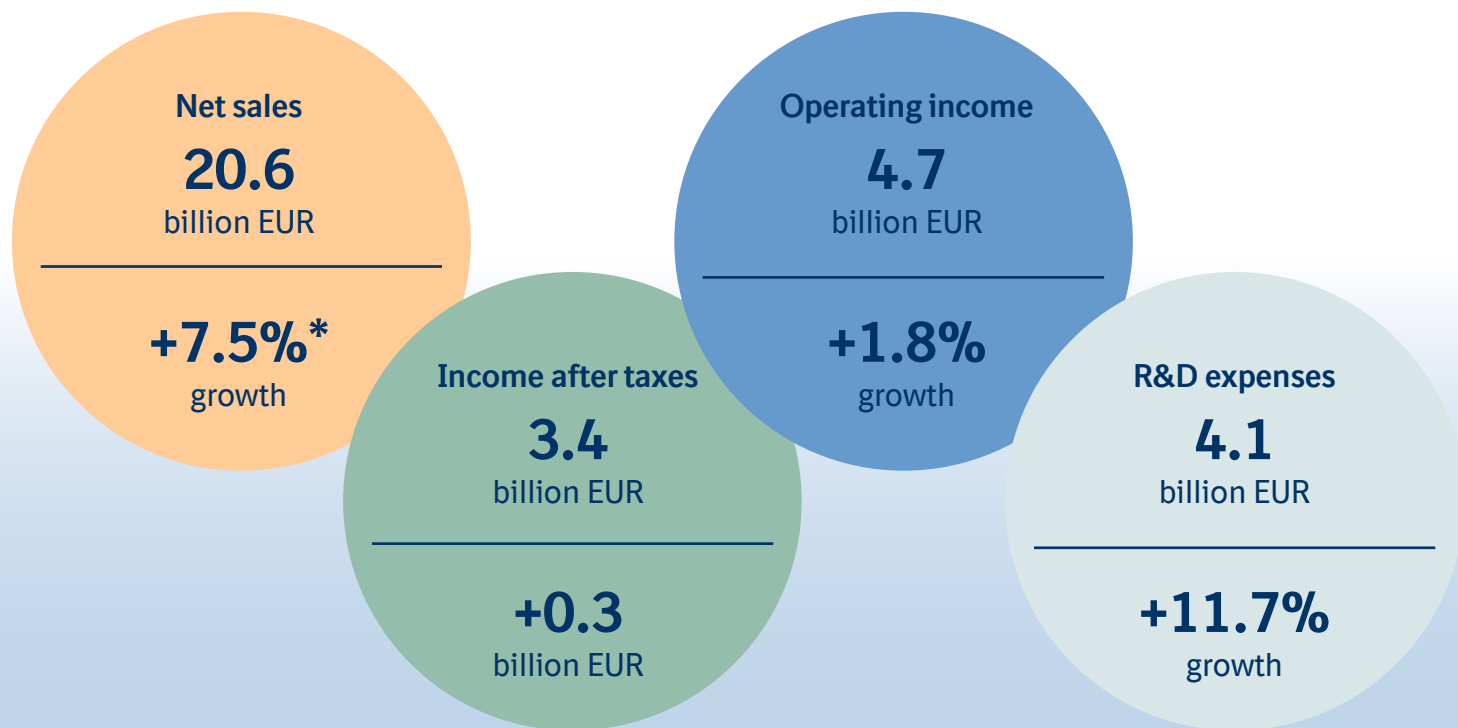
Biberach



More Green

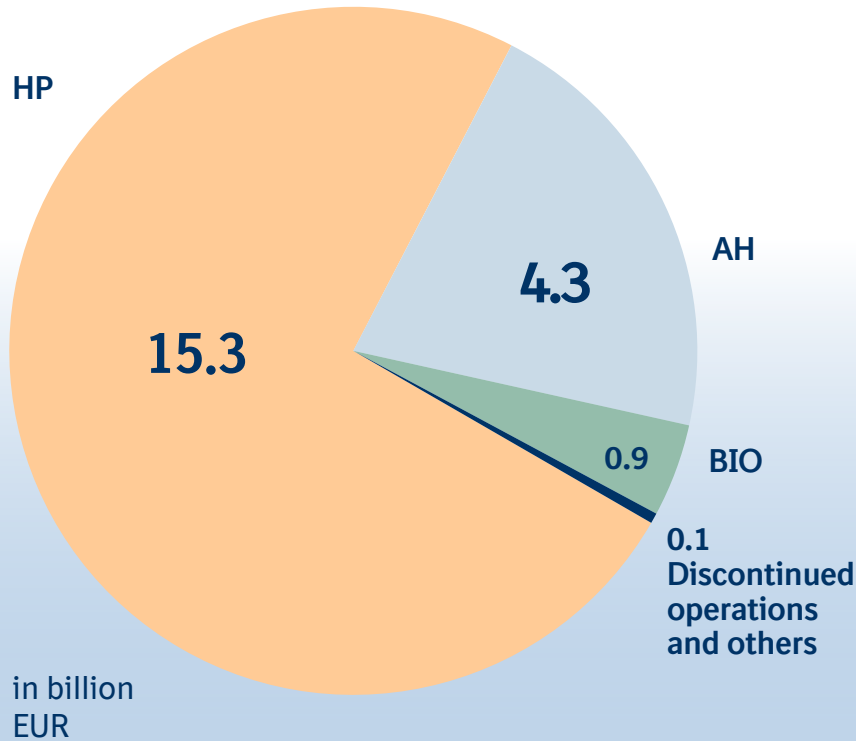
- Completion of biopharmaceutical production facility in Vienna
- Solids Launch Smart factory in Ingelheim
- Development Center for Biopharmaceuticals in Biberach
- Veterinary Public Health production center in Lyon

2021: A successful year for Boehringer Ingelheim, despite ongoing COVID-19



* adjusted for currency effects

Strong growth across all businesses – driven by Human Pharma



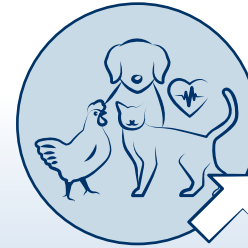
Sales growth of businesses

(currency-adjusted)



+8.4%

Human Pharma
(HP)



+6.2%

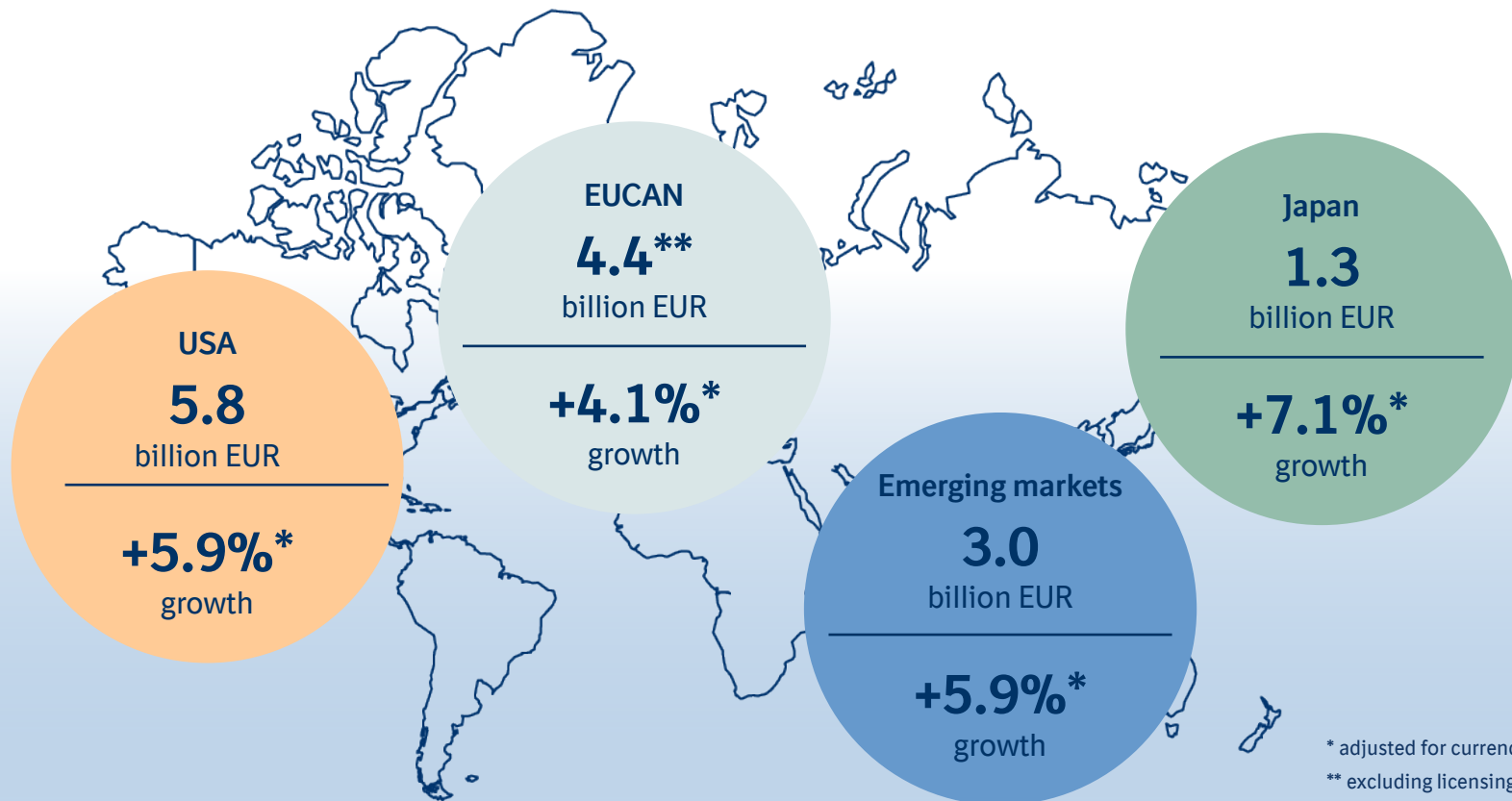
Animal Health
(AH)



+9.5%

Biopharmaceutical
Contract
Manufacturing
(BIO)

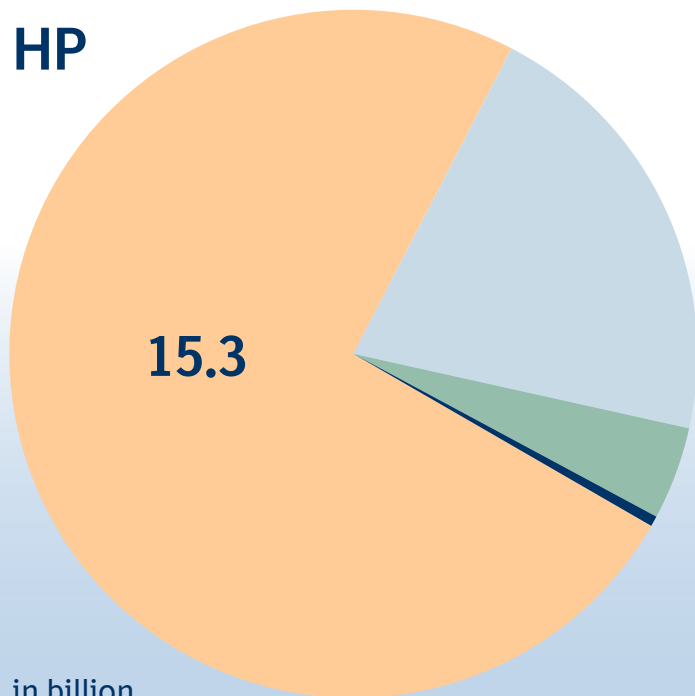
Human Pharma: Net sales growth in all regions



* adjusted for currency effects
** excluding licensing income

Human Pharma: JARDIANCE® and OFEV® drive growth

HP



in billion
EUR

74%

of Group
net sales

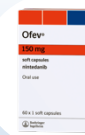
+8.4%*

Net sales growth
compared with
2020

Net sales of important products:



JARDIANCE®
Family**
3.9 billion EUR
(+28.6%*)



OFEV®
2.5 billion EUR
(+25.4%*)



TRAJENTA®/
JENTADUETO®**
1.6 billion EUR
(+5.1%*)



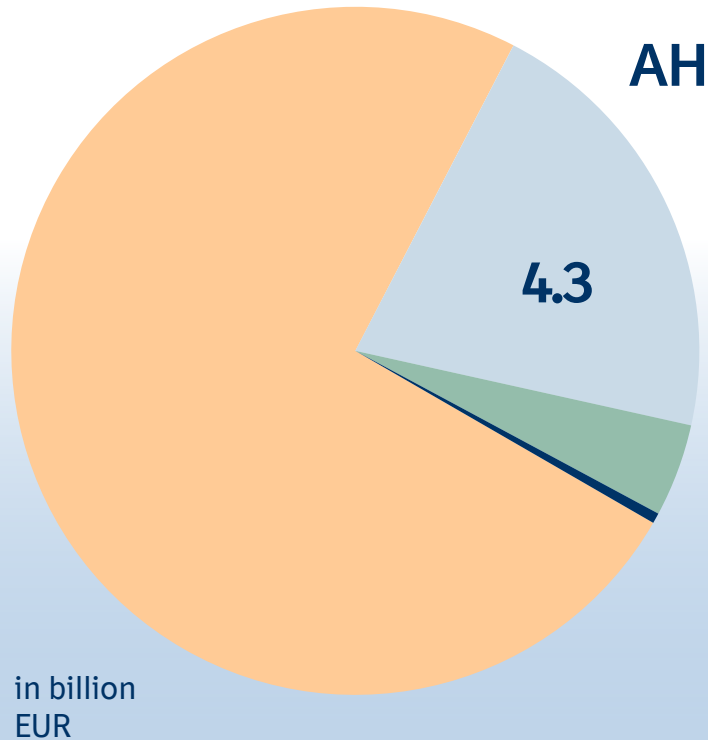
SPIRIVA®
1.5 billion EUR
(-11.9%*)



PRADAXA®
1.3 billion EUR
(-10.3%*)

* adjusted for currency effects
** in collaboration with Eli Lilly
and Company

Animal Health: Very good results in a highly competitive market



21%

of Group net sales

+6.2%*

Net sales growth compared with 2020

Net sales of important products:



NEXGARD®
916 million EUR
(+16.6%*)



**INGELVAC
CIRCOFLEX®/
FLEXCOMBO®**
253 million EUR
(-2.7%*)



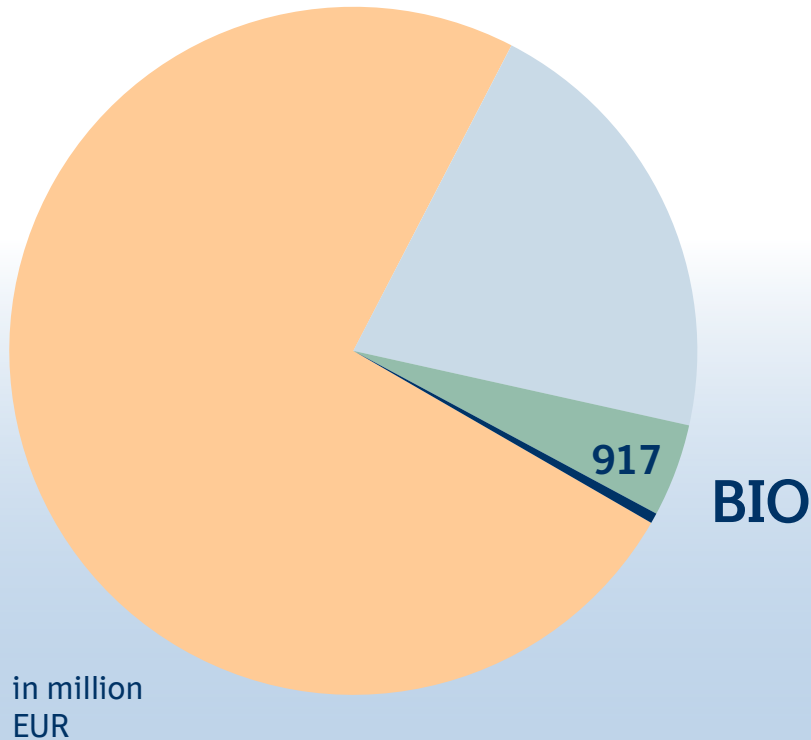
FRONTLINE®
418 million EUR
(+4.8%*)



HEARTGARD®
307 million EUR
(+1.4%*)

* adjusted for currency effects

BIO: Strong demand for our customers' products



4%

of Group net sales

+9.5%*

Net sales growth compared with 2020



Completion of biopharmaceutical facility in Vienna



Main activities: contract manufacturing for Boehringer Ingelheim and industrial customers



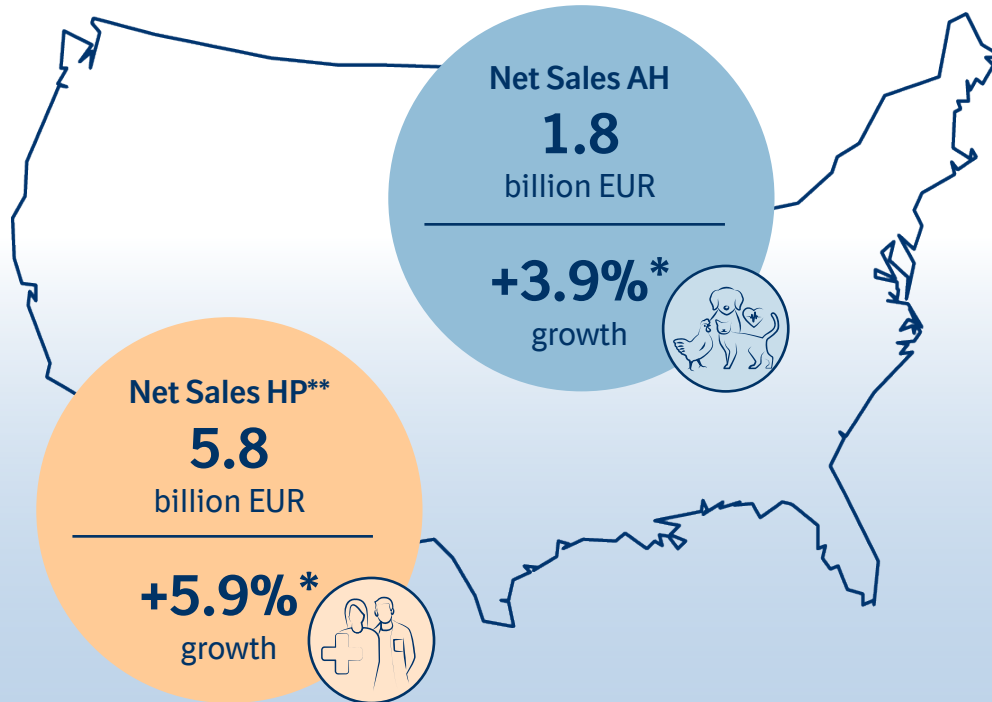
One-stop-shop: from cell line development to drug product



Global supply of biopharmaceutical medications for clinical studies, launch and market

* adjusted for currency effects

USA: The largest market of strategic importance



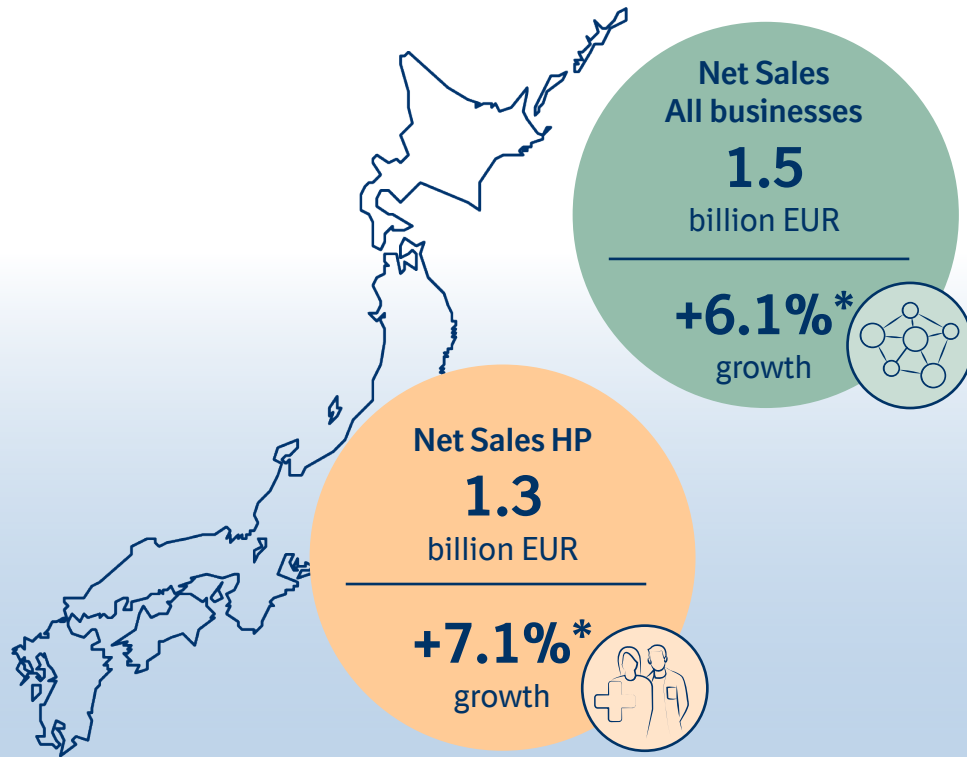
Largest market for all businesses

- Around **8,200** employees
- **4** production sites
- **9** R&D facilities

* adjusted for currency effects

** HP incl. Puerto Rico + Licences

Japan: Solid performance in a mature market



3rd largest pharmaceutical market globally

- Challenging market environment
- Strong growth mainly driven by the Human pharma portfolio

* adjusted for currency effects

China: Continues to be an important market

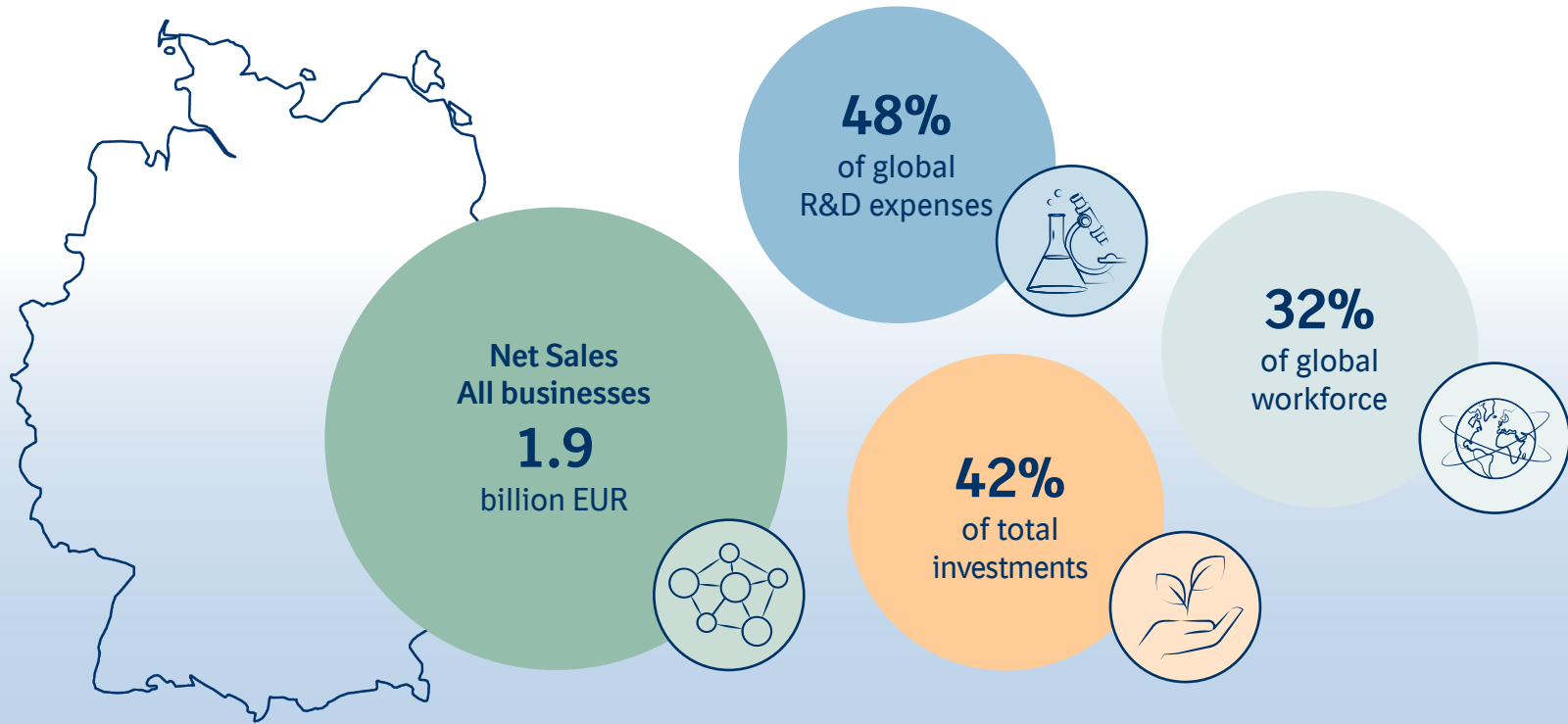


Further extension of activities

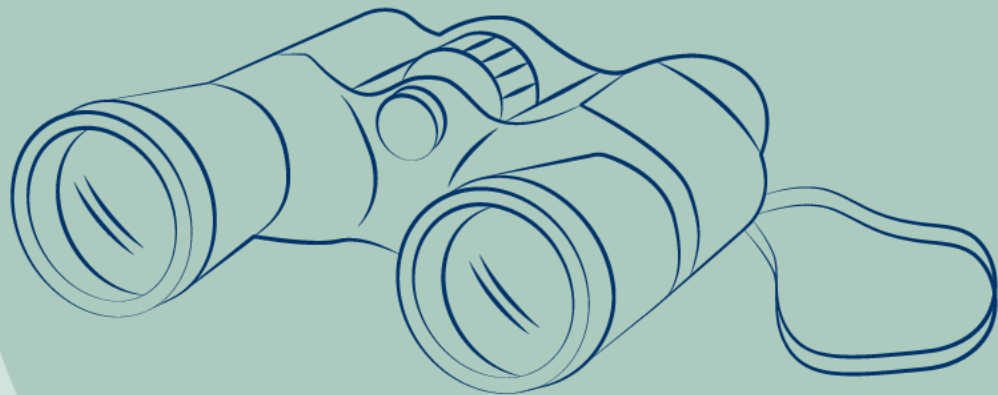
- Expanded the capacity of our Biopharmaceutical production site in Shanghai
- Investment planned in a stroke rehabilitation center
- Animal Health is the main driver of the overall growth

* adjusted for currency effects

Germany: Ongoing high level of investments



Outlook



Hubertus von Baumbach
Chairman of the Board of Managing Directors

Continuous high investments into medical progress

> 25

billion EUR
into R&D

> 7

billion EUR
into production &
supply

Annual Results Press Conference 2022

TOMORROW



Research for a
Healthier Future



Boehringer
Ingelheim