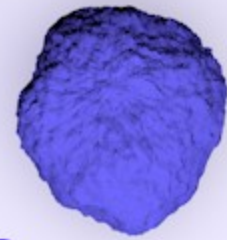


CANCER IMMUNOLOGY @ BI

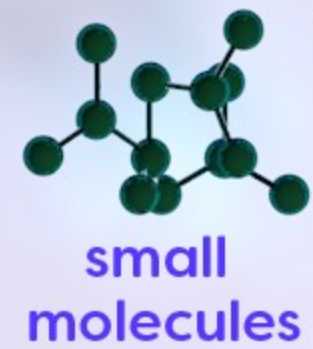
COLD TUMOR



invisible to the immune system with few to no tumor antigens and T-cells

TREATMENT MODALITIES TO TURN 'COLD' TUMORS 'HOT':

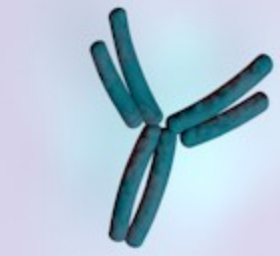
- Cancer Vaccines
- Oncolytic Viruses
- T-Cell Engagers
- Innate Immune Activators
- Myeloid Cell Immune Modulators



small molecules

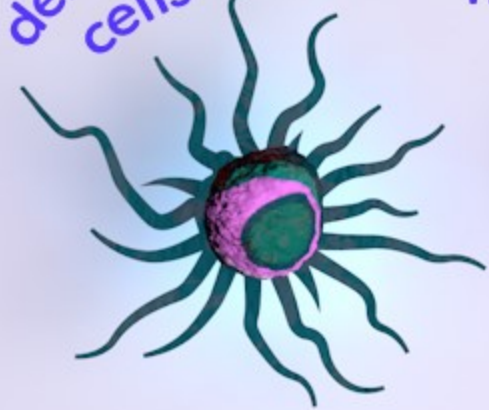


viruses



biologics

dendritic cells



TURN COLD TUMORS HOT

HOT TUMOR



highly visible to the immune system with high numbers of tumor antigens and T-cells

- PD-1
- CD73
- LAG3
- Myeloid Cell Immune Modulators

CHECKPOINTS



T-cells

MICROENVIRONMENT IMMUNE SUPPRESSORS

regulatory T-cells



macrophages

CANCER IMMUNITY CYCLE

