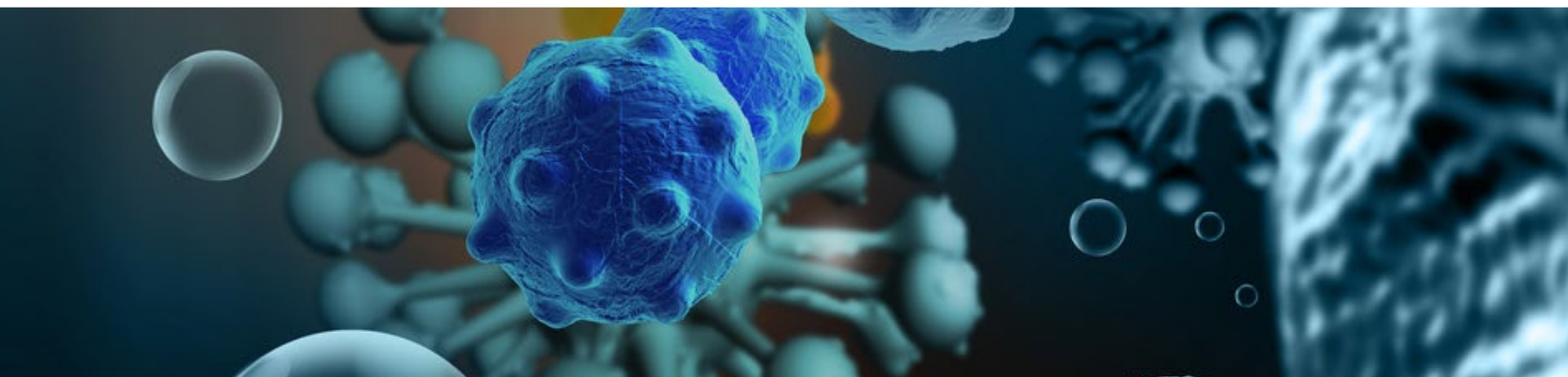


ONCOLOGY



Boehringer Ingelheim welcomes collaborations with partners in **oncology**, who share our passion for improving the health and wellbeing of animals, to help us find solutions to some of the biggest challenges in animal health today.

**Pursuing Innovation**

- Dual research approach in cancer cell-directed therapies and immune cell-directed therapies
- Focus on canine and feline oncology and cancer immunology
- Leading the way in the search for novel therapeutic concepts, biomarkers, drug candidates and treatment modalities.

**Actively pursuing new partnerships in our areas of interest and open to a variety of partnership models to explore:**

- Cancer cell-directed pathways:  
Cell death and DNA damage control | Transcriptional regulation | Growth signalling | Tumour delivery technologies
- Immune cell-directed pathways:  
T-cell modulation | Myeloid cell-modulation | Tumour stromal factors | Tumour antigens.

**For more information visit:**

<https://www.boehringer-ingelheim.com/partnering/working-together-in-ah/partnering-interests>

