

Our Company

Boehringer Ingelheim is one of the world's 20 leading pharmaceutical companies.



> 53,000 employees worldwide



Founded in 1885 in Ingelheim and family-owned to this day

Focus on



Animal Health



Human Pharma

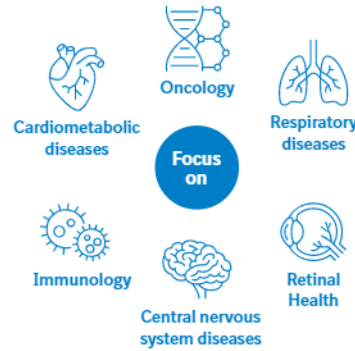


Biopharmaceutical Contract Manufacturing

Successful Business Model

Human Pharma

18,461 million EUR net sales in 2022

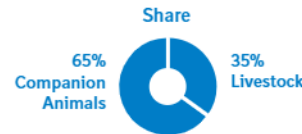


Animal Health

4,559 million EUR net sales in 2022



A global leader



*Veterinary Public Health (VPH)

Overall Financial Performance (2022)

24,149 million EUR net sales

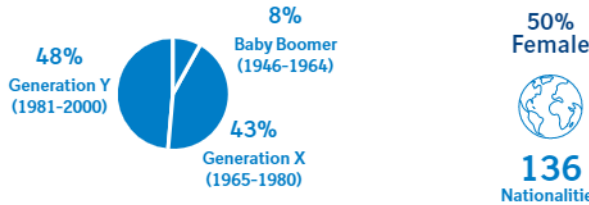
19.8% Return on net sales



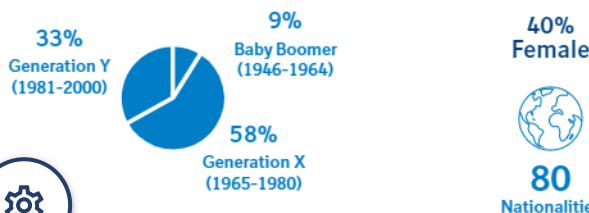
Diversity, Equity & Inclusion (DEI) Drive Innovation

DEI is an integral part of Boehringer Ingelheim's identity. Through our core values of empathy, respect, passion and trust, we foster a diverse, collaborative, open and inclusive work environment, which is key for innovation, value creation and sustainable growth.

All workforce - over 53,000 employees



Supervisors - around 8,600 employees



Biopharmaceutical Contract Manufacturing

Boehringer Ingelheim BioXcellence™ is one of the world leaders in reliable supply of innovative therapies to improve patient health.

1,024 million EUR net sales in 2022

We operate **1** global production network to deliver technological expertise, process excellence, and superior quality.

We are a pioneer in biopharmaceuticals with over **35** years of experience.

We have manufactured **43** approved biopharmaceuticals used by patients all over the world.

Research & Development

Our innovation guiding principles



4,583 million EUR Human Pharma expenses in Research & Development in 2022

24.8% of Human Pharma net sales 2022

Making More Health

Making more health

12 million beneficiaries impacted

42 countries

Making More Health (MMH) is a global, long-term initiative in collaboration with Ashoka (the world's largest network of social entrepreneurs) and works to create sustainable and holistic solutions to today's healthcare challenges for people, animals and communities.

125 active social entrepreneurs worldwide

11,000+ employees engaged



